



WINNEO Pad Printing Consumables & Plate-Making

Discover more at www.glwinneo.com



GUILIN ZHUONUO TECHNOLOGY COMPANY LTD.

Rm. 1206-1209, Block A, Landmark Financial Building, MixC, Guilin, China.

+86 130 7766 8397

+86 136 6773 2409

www.glwinneo.com

info@glwinneo.com



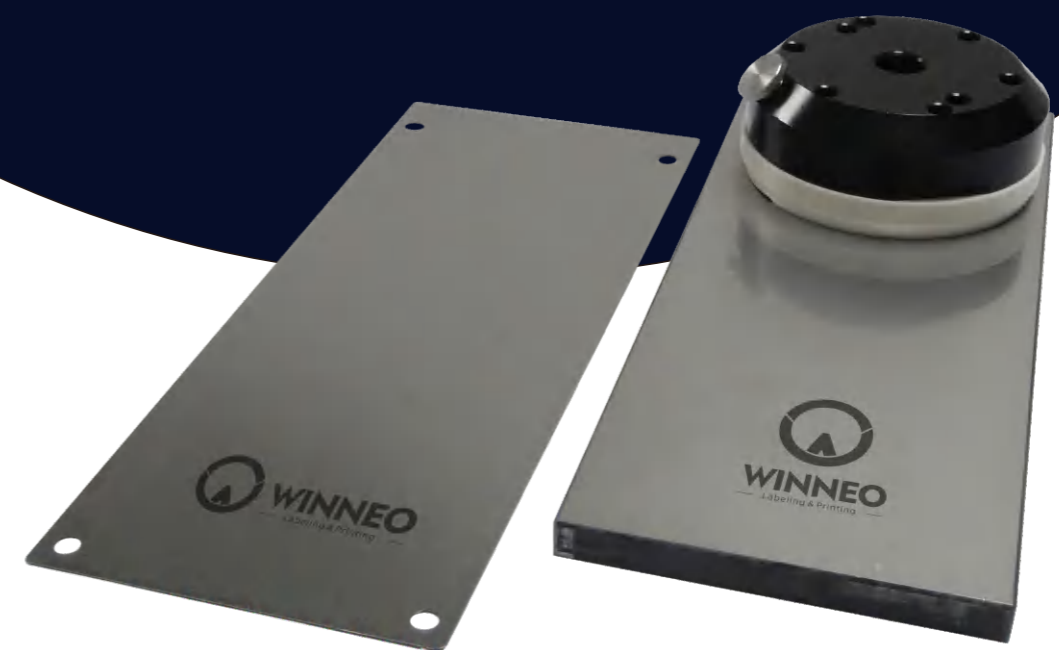
WeChat



WhatsApp

Pad Printing Consumables & Plate-Making

Achieve Printing Perfection Powered by Precision Consumables & Plate-Making Systems



Thousands of miles, a promise to never lose our original heart.

**WINNEO - CHINA'S LEADING
MANUFACTURER OF PAD PRINTING
CONSUMABLES, DELIVERING
PREMIUM CONSUMABLES AND
EXPERT PLATE-MAKING SUPPORT
WORLDWIDE.**

WINNEO作为中国领先的移印材料制造商，
正为全球客户提供优质耗材和专业制版的支持。

1

About WINNEO

- WINNEO·Original Aspiration
- WINNEO Development and Innovation

关于WINNEO

- WINNEO·初心 1
- WINNEO发展与创新 3

2

Pad Printing Consumables

- Pad Printing Thick Plates
- Pad Printing Thin Plates
- Pad Printing Aluminum Plates
- Pad Printing Doctor Blades
- Pad Printing Ink Cups & Rings
- Pad Printing Pad & Production

移印辅材

- 移印厚钢板 5
- 移印薄钢片 7
- 移印铝板 9
- 移印刮刀 10
- 移印油盅和刀环 11
- 移印胶头与制作 15

3

Pad Printing Plate-Making System & Equipments

- Pad Printing Plate-Making System
- Pad Printing Plate-Making Equipments

移印制版系统与设备

- 移印制版系统 19
- 移印制版设备 21

- WINNEO Experience Center

- WINNEO 体验中心 27



Welcome to the world of “WINNEO Pad Printing - Consumables & Plate-Making”

WINNEO believes that the seamless integration of machines and consumables delivers optimal printing results.

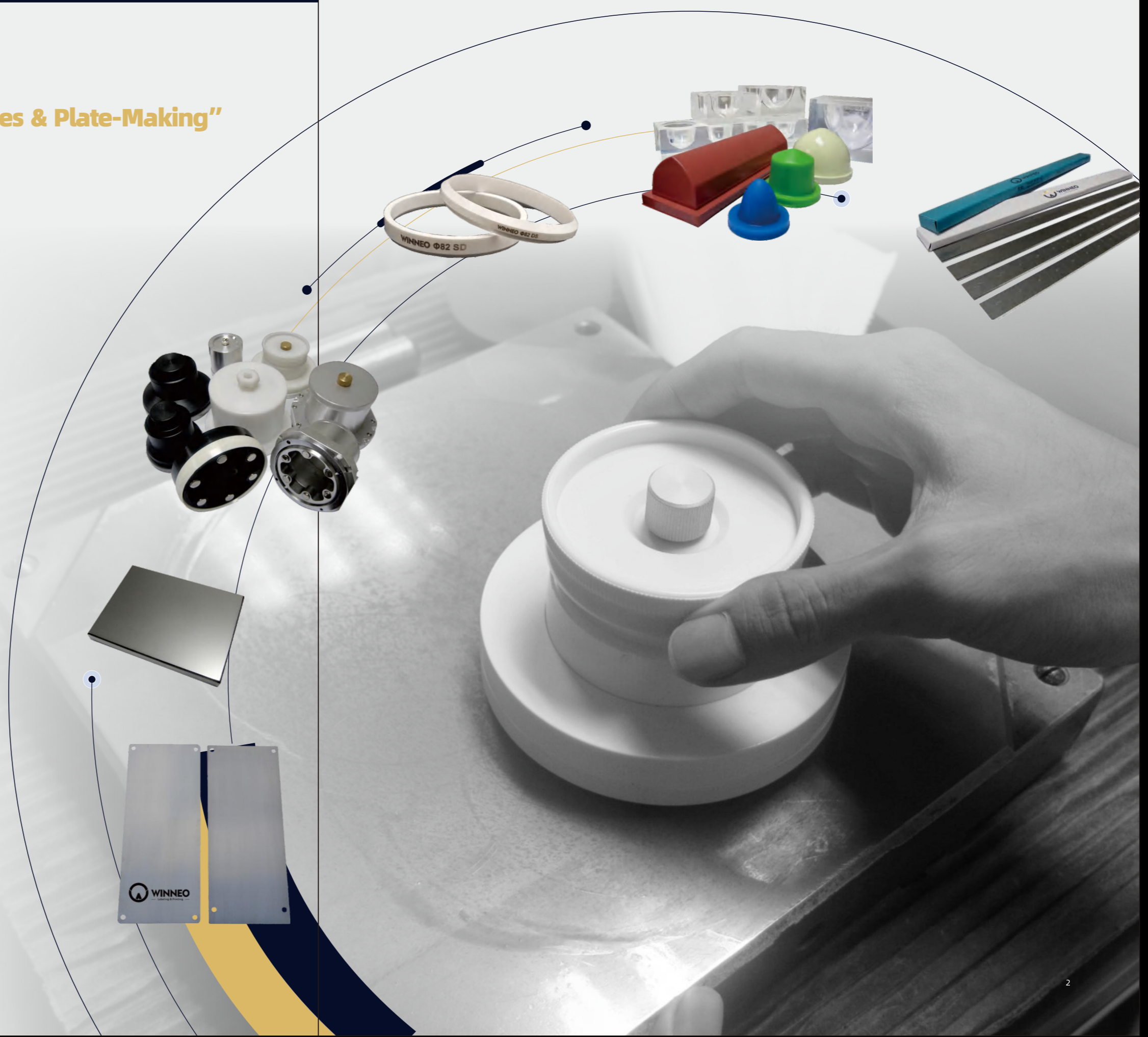
WINNEO 相信机器和耗材融为一体，能创造出最佳印刷效果。

While providing a variety of high-quality pad printing consumables solutions, we have summarized our 20 years of accumulated pad printing plate-making principles and experience into an operable and monetizable pad printing plate room system.

在提供各类优质移印耗材解决方案的同时，我们将累积20年的移印制版原理与经验，总结成一套可操作、可变现的移印版房系统。

WINNEO is delighted to help you establish your own pad printing plate-making workshop, giving your printing and production with greater advantages and competitiveness!

WINNEO非常乐意帮助您拥有一套属于自己的移印制版工作间，让印刷与生产具备更大的优势与竞争力！





Key Milestones:

- 2004** | Founded as pad printing steel plate factory in Guangdong, China
- 2006** | Breakthrough in plate-making systems & components production
- 2009** | Overseas market strategy initiated
- Present** | WINNEO Global Pad Printing Materials Support Service Center established

核心发展历程

- 2004 | 移印钢板生产基地在中国广东启动
- 2006 | 移印制版系统与耗材实现垂直整合
- 2009 | 启动海外市场战略
- 现今 | 建成WINNEO全球移印材料支持服务中心

WINNEO Pad Printing - Consumables & Plate-Making Systems:

Brand Evolution>>

Established in **2004** in Guangdong, China, WINNEO has grown into a leading innovator in pad and screen printing technologies. Our journey began with specialized expertise in printing consumables and plate-making system development.

A defining milestone came in **2006** when WINNEO successfully developed proprietary plate-making equipment including coating, exposure and etching systems. This innovation empowered our in-house production of precision components: printing silicone pads, pad molds, sealed ink cups and doctor blade rings - all customizable for diverse pad printing industrial applications.

Expanding globally since **2009**, WINNEO now serves clients across 130+ countries. With nearly 20 years of focused R&D, we've built comprehensive expertise and countless successful implementations, solving complex printing challenges worldwide.

Today, **WINNEO** delivers not just traditional printing solutions but also advanced product marking and labeling techniques. Through cutting-edge technologies and responsive service networks, we've become the trusted partner for global manufacturers, building lasting collaborations to address evolving industry demands.

"WINNEO Pad Printing - Consumables & Plate-Making"已崛起成为中国移印丝印行业的杰出领导者。自成立以来，它一直致力于生产移印丝印辅助材料并开发移印丝印制版系统。追溯到**2004**年，WINNEO移印钢板工厂始建于中国广东省东莞市。

2006年，WINNEO通过自主研发移印制版专用的上浆、晒版及蚀刻设备，取得了一项重大里程碑式的成果。它还开始了生产关键的移印辅助部件，如移印胶头、胶头模具、移印墨杯和刮刀环等，并为客户设计和定制这些部件以满足不同客户的印刷需要。

自**2009**年起，WINNEO开始向全球拓展业务，服务海外客户。经过近20年的潜心研究，如今我们在移印材料和制版方面积累了深厚的专业知识和大量客户案例。我们的移印产品和服务现已覆盖到100多个国家和地区，为国内外客户解决了无数移印丝印的材料及制版难题。

如今天的**WINNEO**品牌不仅提供传统的印刷解决方案，还推出先进的产品标识与图案展示方法。凭借着先进的印刷与标签技术以及快速响应的服务体系，它正在成为全球产品制造商和经销商的首要商业合作伙伴，力求建立持久的合作关系，满足不断变化的需求。



Thick Steel Plate 移印厚钢板

Premium steel substrate, precision heat treatment, and exacting machining & grinding processes are essential for producing high-quality pad printing plates.

优质的钢板基材, 精湛的热处理工艺, 精确的机加工及研磨工序, 对生产一块高品质的移印钢板至关重要!



Pad Printing Steel Plate Material Comparison Chart 移印钢板材质对比

Steel Type 钢材型号:	GCr15	2510 (01, CrWMn)	SKD11 (9Cr12MoV)
Plate Mark 钢板型号:	Z01	Z02	D2
Rust Resistance Ability 抗锈能力:	☆☆☆	☆☆☆☆	☆☆☆☆☆
Printing Life 耐刮性:	✓✓	✓✓✓✓	✓✓✓✓✓✓

Production Parameters 移印钢板生产技术参数

Heat treatment Hardness 热处理硬度:	HRC 63+/-1
Cliché Surface Finish Roughness 钢板表面光洁度:	Black Surface --- Ra0.1µm Bright Surface --- Ra0.01µm Mirror Surface --- Ra0.001µm
Cliché Surface Parallel 钢板表面平行度:	For Open Type Pad Printers.....500:0.05mm For Cup Type Pad Printers.....500:0.005mm
Cliché Machining Thickness 钢板加工厚度:	Common thickness: 9.8-10.2mm Special thickness: 8mm, 9mm, 12mm, 13mm, 15mm Other thickness can be customized.
Cliché Plates Common Size 常用尺寸:	70x140mm, 75x100mm, 75x150mm, 75x200mm 100x100mm, 100x150mm, 100x200mm, 100x215mm, 100x250mm, 150x150mm, 150x300mm, 150x350mm 200x200mm, 200x500mm, 200x550mm Other size can be customized.
Machining Accuracy 加工精度:	Machining tolerance for L/W/H: ±0.2mm
Cliché Machining Size 钢板加工尺寸:	Custom special-spec pad printing plates available.

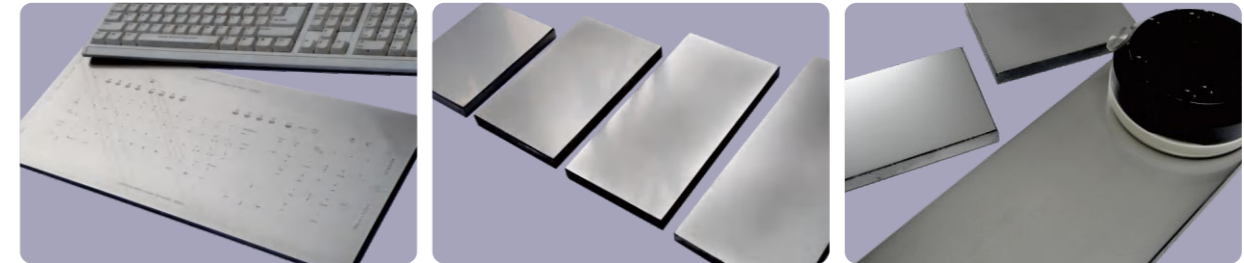
旧移印钢板可回收翻磨, 重复使用, 降低成本, 更环保!

Used pad printing plates can be recycled, re-ground, and reused - reducing costs while being eco-friendly!

一块品质优良的移印钢板, 经热处理后钢板表面至少0.15毫米深度内的硬度将均匀如一, 其耐用层厚度远超常规蚀刻图案的深度(0.02-0.04毫米)。所以, 旧钢板不用急着报废, 可经过专业打磨翻新, 性能如初。



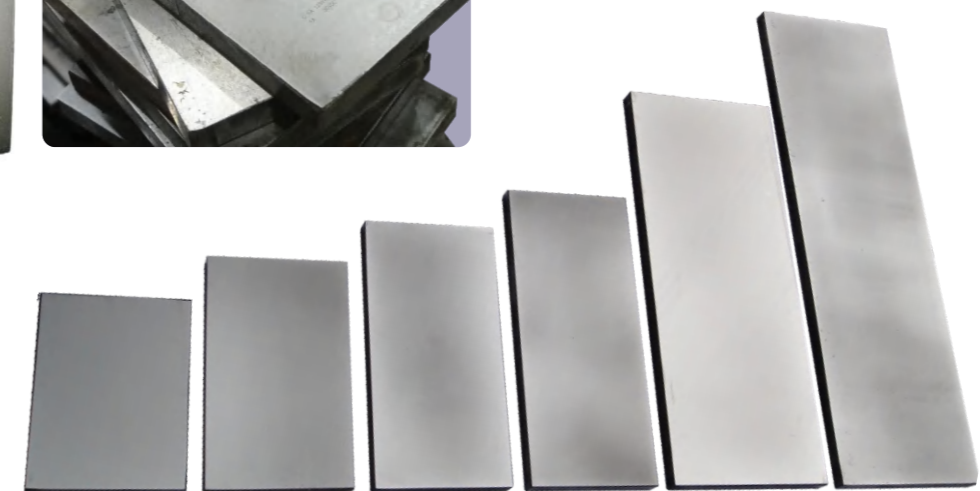
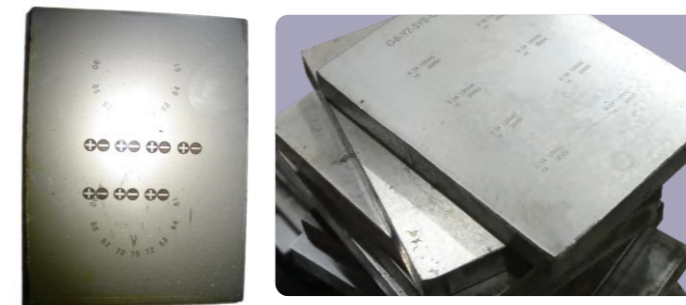
A quality pad printing steel plate maintains uniform hardness to at least 0.15mm depth after heat treatment - far deeper than the etched pattern depth (0.02-0.04mm). So don't scrap used plates; professional refinishing can make them work like new!



Recommended Regrinding Guidelines for Used Plates

Regrinding times: 2-3 for oil-hardening steel (HR/EN) | 5+ for chromium steel (D2)

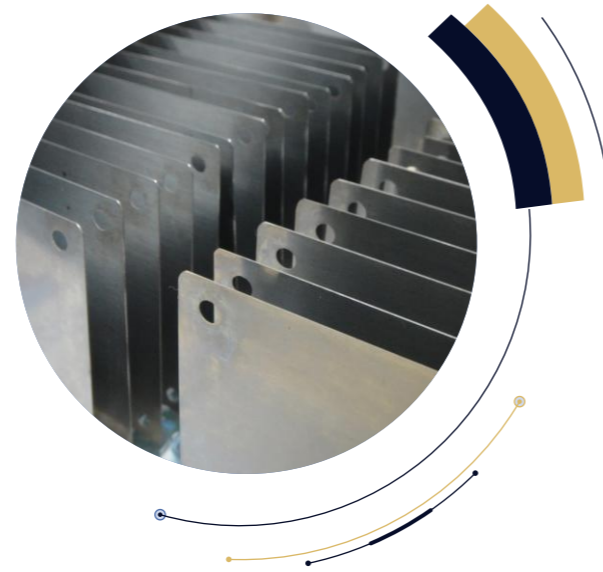
旧钢板翻磨建议:
油钢(Z01/Z02材质)2-3次 | 铬钢(D2材质)5次以上





WINNEO thin steel plates use premium Sandvik steel from Sweden, guaranteeing unwavering quality: hardness stability, flatness, smoothness, rust & scratch resistance during printing.

WINNEO移印薄钢片采用瑞典Sandvik优质钢材，品质始终如一：硬度稳定、表面平整光洁，印刷过程中具备卓越的防锈与耐刮擦性能。



Thin Steel Plate Material Comparison & Production Parameters

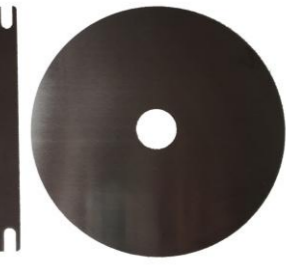
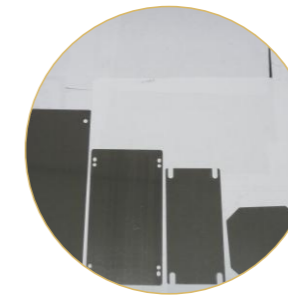
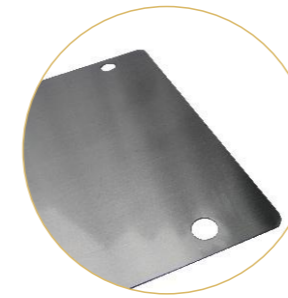
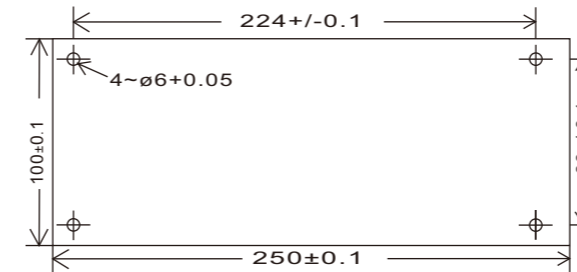
钢片材质对比 & 技术参数

Material 钢片材质:	Carbon steel	Stainless steel
Thickness 钢片厚度:	0.25mm 0.3mm 0.5mm...	0.25mm
Hardness 钢片热处理硬度:	HRC52+/-1	HRC52+/-1
Rust Resistance Ability 抗锈能力:	★★★	★★★★★
Common Size 常用尺寸:	100x200mm, 100x215mm, 100x216mm, 100x250mm, 100x260mm, 100x300mm, 100x350mm, 100x400mm, 120x250mm, 150x300mm	
Machining Accuracy 加工精度:	Machining tolerance for L/W: ±0.1mm For hole position: +0.05mm	
Use for Printers 适用移印机:	We can customize steel plate dimensions to fit any brand's machine models. Such as TAMPO, KENT, WUTUNG, WINON, CHUNGFOU, etc...	

Record Cliché with Pre-punched holes 钢片孔位定制

Important Note: Precisely mount holed printing plates, must measure hole spacing accurately.

带孔钢片需要固定到移印底板上，精确测量孔心距的位置是关键！

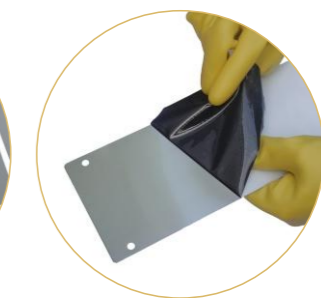
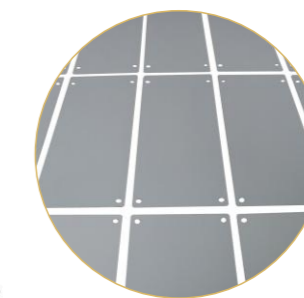
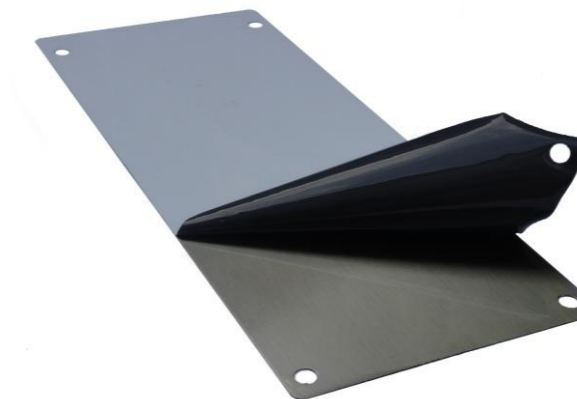


Custom hole processing available from client drawings/samples.
只需提供客户孔位图纸或样板给我们，便可以为您加工任何订制孔位。

Record Cliché with Pre-coated 预上浆钢片

WINNEO provides pre-coated steel plates, eliminating customers' coating steps and reducing plate-making time. Our automated dip-coating process ensures uniform coating layers, while the protective film prevents exposure failure.

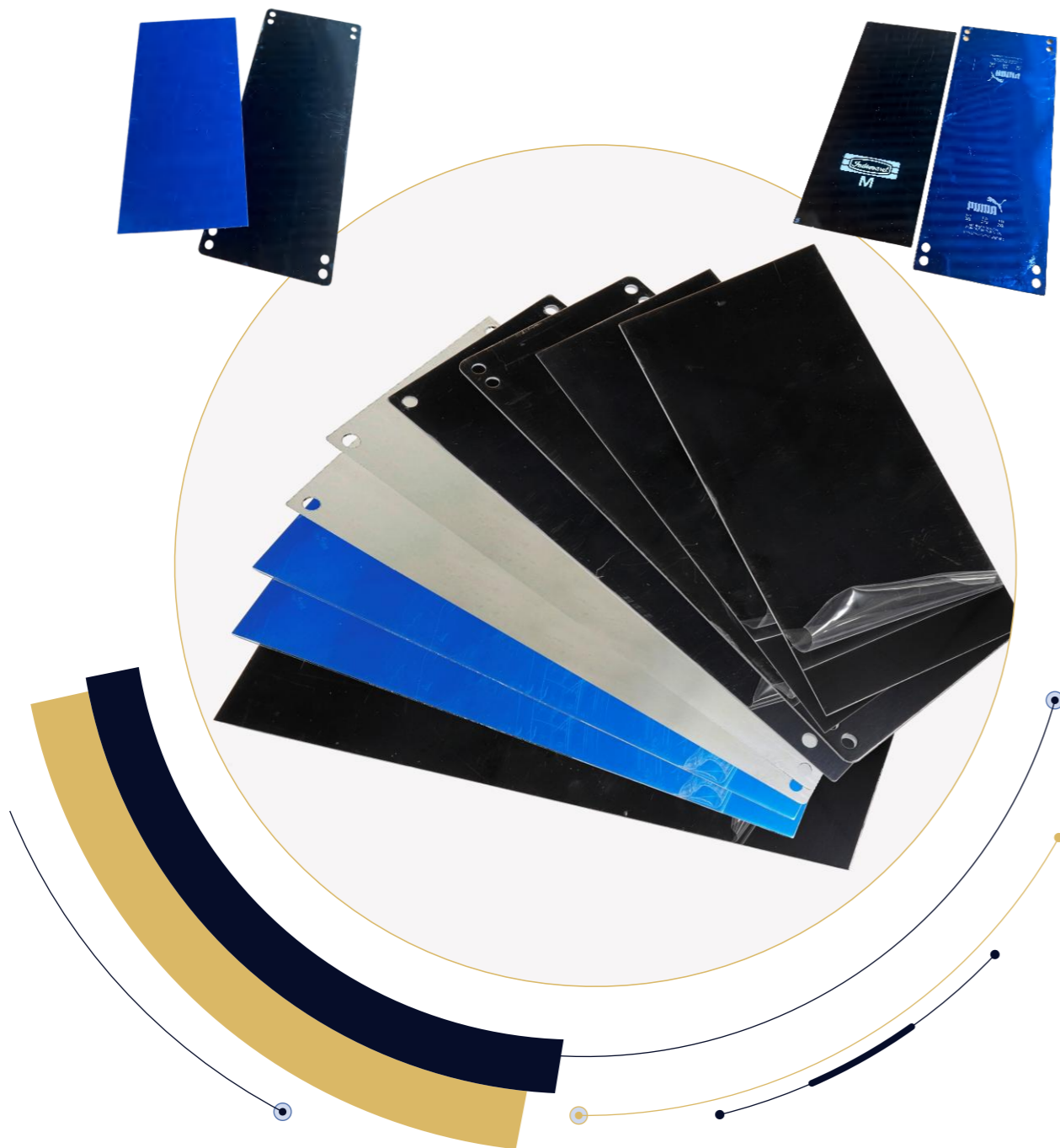
WINNEO提供预上浆钢片，省去客户上浆工序，缩短制版时间。
我们采用自动化浸入式涂层工艺上浆，确保浆层均匀；保护膜可防止曝光失效。





Pad Printing Aluminum Plate 移印铝板参数对比表

Parameter	0.5mm Version	0.95mm Version
Base Material	Pure Aluminum(0.5mm)	Aluminum(0.5mm) + Steel(0.45mm) Composite
Magnetism	Non-Magnetic	Magnetic (for ink cup alignment)
Color Options	Blue / Black (standard)	



Tough Hardness, Smooth Blade Edge
Tight & Scratch-Resistant, No Ink Drag

强韧硬度 刀口平滑 严密耐刮 无拖墨



3 specifications: 4-piece, 18-piece, and full strip
3种规格: 4分断、18分断和整条



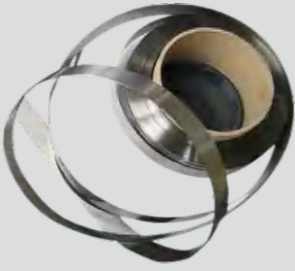
3 packaging options: white box, black box, green box
3种包装: 白盒、黑盒、绿盒

Hard Doctor Blades

	Size[mm]	Packing Spec
	18x0.5x350mm	20pcs/box
	18x0.5x400mm	10pcs/box
	18x0.5x600mm	10pcs/box
	18x0.5x360mm with 18 comparted lines	20pcs/box
	18x0.5x360mm with 4 comparted lines	20pcs/box

Hard blades within 1.2m can be precision-customized to your needs!
1.2M以内的硬刀片可根据需求支持精准定制!

Soft Doctor Blades

	Size[mm]	Packing Spec
	T=0.2mm/W=20mm	L=100M/roll
	T=0.3mm/W=25mm	L=100M/roll
	T=0.1mm/W=30mm	L=1M/pc

Flexible Cutting! Any length within 100 meters, cut on demand without waste.
剪切灵活! 100米内任意长度, 按需裁切不浪费。



The inclusion of extra ink cups and doctor rings enhances ink change efficiency. WINNEO ink cups are not only compatible with other brands of machinery but also serve as a cost-effective source for your purchases.

配备额外的油墨和刀环，有助于提高换墨的效率，WINNEO的油墨不仅可与其他品牌的机器通用，更是价格合理的油墨购买渠道。

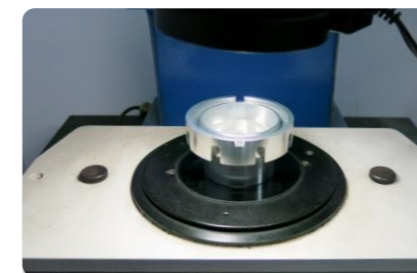


Send us your design - WINNEO delivers precision-matched ink cup sets!

将您的设计发送给我们——WINNEO 提供精准匹配的油墨套装！



100% Strict Quality Check 油墨品控质检



Precision instrumentation ensures the production of 100% machine-compatible ink cups.

精密仪器测算生产匹配100%适配机器的油墨



Performance Testing: Simulates real-world conditions to evaluate sealing effectiveness and sliding performance.

性能测试，模拟实际使用环境进行密封性、滑动性测试



Documentation and Identification: Inspection data is meticulously recorded for every batch of ink cups after testing.

记录与标识，每批次油墨经过检验后，详细记录检验数据



We can match your ink cups and provide recommendations on the selection of pad printing rings.

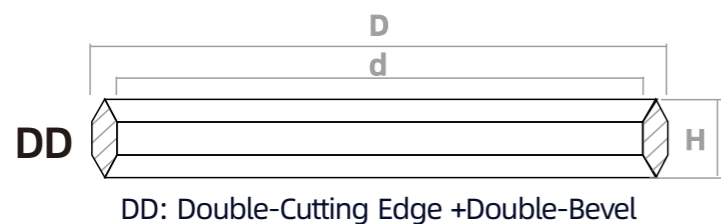
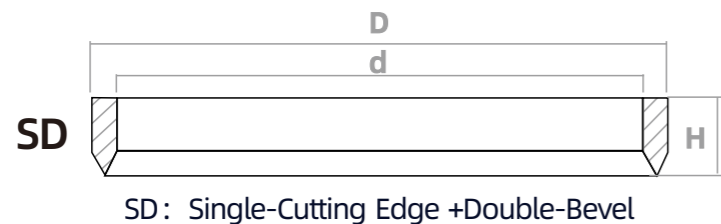
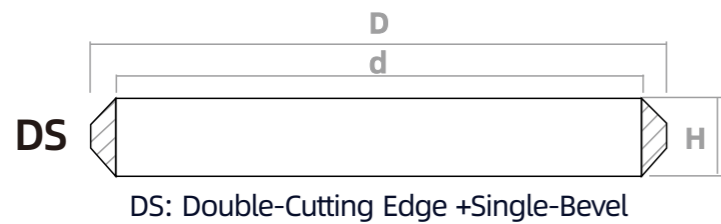
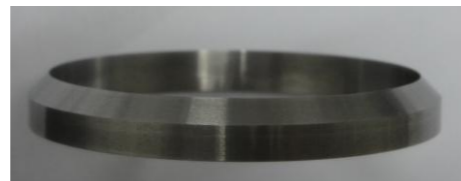
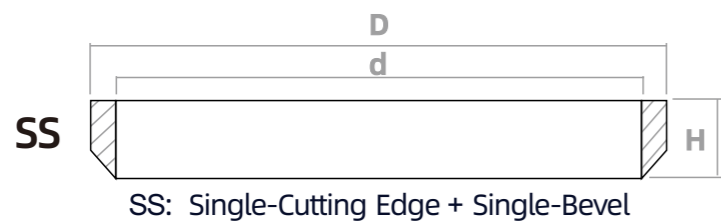
我们可以匹配你的油墨，提供刀环选择方面的建议。



Carbide Rings
钨钢环

Ceramic Rings
陶瓷环

Ring Blade Edge Display 刀口展示



Pad Printing Rings Common Size Chart 刀环常用尺寸表

Popular Size	D(mm)		h(mm)	Blade & bevel
	Outer dia.(mm)	Inner dia.	Height	
	46	42	6	SS
	65	60	5.2	SS
	60	53	13	SS/SD/DS/DD
	70	60	12	SS/SD/DS/DD
	90	82	12	SS/SD/DS/DD
	95	90	5.2	SS
	100	90	12	SS/SD/DS/DD
	120	110	13	SS/SD/DS/DD
	125	120	5.2	SS
	130	120	12	SS/SD/DS/DD
	135	126	14	SS/SD/DS/DD
	140	135	12	SS/SD/DS/DD
	165	155	15	SS/SD/DS/DD
	192	180	16	SS/SD/DS/DD
	201	189	16	SS/SD/DS/DD

We can manufacture any special specification rings according to your order.

100% Strict Quality Check 刀环品控质检



Professional tools are used to measure the inner diameter, outer diameter and height of the pad printing ring, ensuring no dimensional deviation.

专业工具测量刀环的内径，外径和高度，确保尺寸无偏差



A manual tactile inspection is performed to ensure the inner wall of the ring is smooth and flat with no unevenness.

手触检查确保刀环的内壁光滑、平顺，无凹凸现象



Inspect the appearance of the ring under a magnifying glass for damage, deformation or corrosion.

放大镜下检查刀环的外观是否有损坏、变形或锈蚀

Tips for Reusing Pad Printing Rings 刀环重复利用技巧

"Slightly worn or nicked doctor blade rings (nicks $\leq 0.03\text{mm}$ deep) can be easily reground on our specialty lapping discs - saving you money and the environment!"

对轻微磨损或较小缺口(缺口深度 $\leq 0.03\text{mm}$)的旧刀环，只需要在专用研磨盘上进行简单的研磨，即可使刀环重复使用，降低成本，更环保!



Before

Gaps not over 0.03mm depth

After



With 20 years of experience in the pad printing industry, WINNEO manages an extensive pad printing rubber pad database.

WINNEO will be happy to support and advise you in choosing the right printing pad.

WINNEO在移印行业累积了20年经验，管理着一个庞大的胶头数据库。WINNEO很乐意为您提供支持和建议，帮助您选择合适的胶头。

Standard Printing Pads

标准胶头

The standard printing pads of WINNEO can meet almost all application requirements, with a variety of specifications available.

WINNEO的标准胶头几乎可以满足所有应用需求，胶头有多种规格可供选择。



Customized Printing Pads

定制胶头

If no suitable pad shape is available, we will create a printing pad perfectly matched to the substrate you want to print.

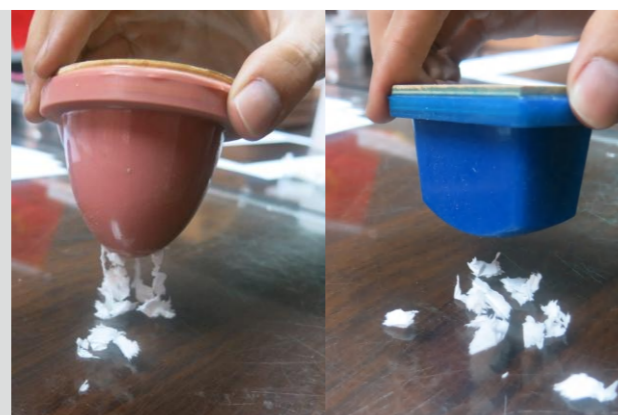
如果没有合适的胶头形状，我们将根据您所需的承印物定制完美匹配的胶头。

Antistatic Printing Pads

防静电胶头

Eliminate dust attraction and ink splatter caused by static during printing, ensuring crisp prints on sensitive materials.

可消除印刷过程中因静电产生的粉尘吸附和油墨飞溅，确保敏感材质(如一些塑料电子产品)印刷清晰。



Hardness Rating of Pad 胶头硬度等级

Select the right pad hardness level for your optimal printing results.

选择适合的胶头硬度等级，以获得最佳印刷效果。

Soft (S): 5-8 Shore A — Best for large curved surfaces or wide-area printing

Medium (M): 10-15 Shore A — Universal hardness for most applications

Hard (H): >15 Shore A — Ideal for complex shapes & high-precision small patterns

软胶(S): 5-8 Shore A – 适用于表面形状弧度较大，或印刷面积较大图案的产品

中胶(M): 10-15 Shore A – 通用型硬度，适用于大多数产品

硬胶(H): > 15 Shore A – 适用于表面异形特殊、图案较小且精密度高的产品



WINNEO Pad Printing Mold WINNEO胶头模具

High-precision acrylic or aluminum molds with CNC-machined cavities ensure consistent pad dimensions and durability.

采用高精度亚克力或铝质模具，CNC加工型腔确保胶头尺寸一致且耐用。



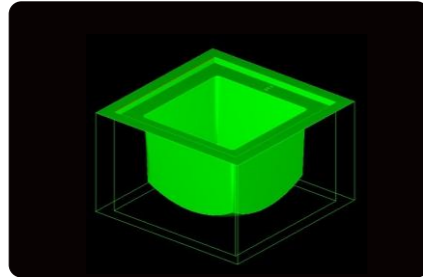
Pad Production Flowchart 移印胶头制作流程

WINNEO provides customized pad & mold design solutions.

WINNEO支持胶头及模具的定制设计

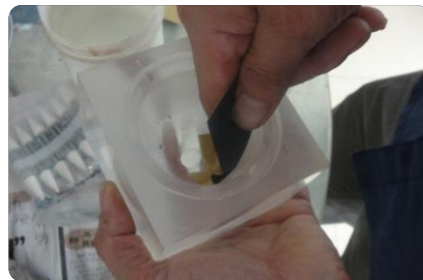
① Precision Scanner for Dimension Confirmation

精密扫描仪，确定尺寸



③ Mold polished

模具抛光



⑤ Vacuum Suction to Prevent Holes

真空抽吸，防止出现孔洞



⑦ Cure for 3-4 hours then demold

固化3-4小时后脱模

Under low-temperature conditions, cure at 60°C for 60 minutes.
如果是在较冷的冬天，需要进入60摄氏度烘箱，烘烤1小时左右



② High-precision CNC machining mold

高精度数控加工模具



④ Mix silicone rubber and oil in proper ratio

按比例混合硅胶与硅油



⑥ Add hardener and mix

加入硬化剂搅拌



⑧ Check pad hardness with Shore durometer when done

成品完成



Silicone Rubber & Silicone Oil 移印胶浆与硅油

Silicone Model 胶浆型号	Color 颜色	Mixing Ratio of Curing Catalyst 固化剂比例	Origin 产地	Packaging Specification 包装规格
WSC-2926 AB	Red	A:B=9:1	China	5 kg/bucket (NW) 25 kg/bucket (NW)
WSC-2923AB	White	A:B=9:1	China	5 kg/bucket (NW) 25 kg/bucket (NW)
WACKER/623 AB	Red	A:B=9:1	Germany	5 kg/bucket (NW)
WSC-A3132	Blue (Anti-static)	A:B=9:1	Italy	5.5 kg/bucket (NW)
WSC-A20a	Green (Anti-static)	A:B=9:1	France	5 kg/bucket (NW)
Silicone Oil Model 硅油型号	Color 颜色	Oil% 硅油添加比例	Origin 产地	Packaging Specification 包装规格
WSC-oil/101	Transparent	0~40%	China	5 kg/bucket (NW) 25 kg/bucket (NW)



curing agent

silicone rubber

silicone oil

Vacuum degassing machine for silicone pads 胶头抽真空机

Unit Name: Vacuum degassing machine for silicone pads

Machine Model 型号	WN-VC001
Voltage/ Power 电压功率	380V/50Hz
Machine Model 型号	WN-VC001
Pumping Rate 抽气速率	15L/S
Working volume 真空箱体尺寸	L:545mm W:375mm H:290mm



For custom pad or mold orders, please refer to the WINNEO Pad Model Reference Chart or provide your sample pad. We will precisely customize it according to your specifications.

胶头或模具订做可参看WINNEO胶头型号对照表，或提供您的胶头样板，按您的实物要求完美订制。



YOUR DESIGNS. YOUR SCHEDULE. YOUR RULES! With WINNEO In-House Plate Room, You Get:

Designs stay locked down
Plate & pads-making costs slashed by 50%+
Steel plates & silicone pads in <4hrs
Profit from Excess Capacity via OEM services

您的设计，您的主场，您的规则！选择WINNEO自主版房，实现：

设计图纸绝密保护
制版成本直降50%+
4小时内印版快速投产印刷
剩余产能对外加工服务创造收益



Pad Printing Plate-Making Materials 移印制版材料

FUJI Photosensitive Emulsion Series 富士感光浆系列



【FUJI Green Can Packing Series】 富士绿罐系列感光浆、显影水、蓝药水

FUJI FMR-40 Photosensitive Emulsion富士FMR-40感光浆 2L/can
FUJI FMR Developer富士 FMR 显影液 2L/can
FUJI Blue Dyed Developer富士蓝药水 2L/can



【FUJI White Can Packing Series】 富士白罐系列感光浆、显影水、蓝药水

FUJI Photosensitive Emulsion Coating 富士自罐感光浆 2L/can
FUJI Developer 富士白罐显影水 2L/can
FUJI Blue Dyed Developer 富士白罐蓝药水 2L/can



Etching Chemical Powder 机用蚀刻粉 40kg/box

WINNEO provides turnkey solutions for your custom pad printing plate-making workshop.

Pad Printing Plate-Making Process 移印制版工艺流程



Reference data - final parameters subject to actual production conditions. 提示：参考数据，实际参数请按生产条件调整。



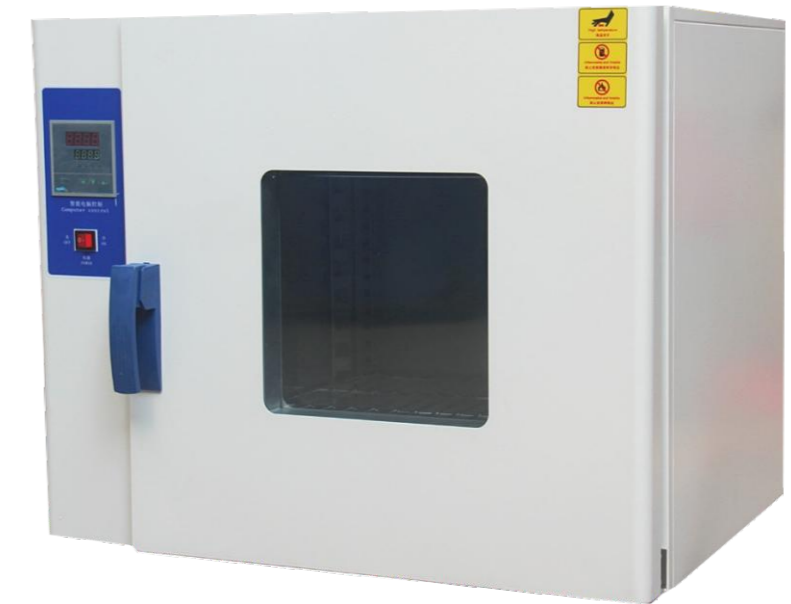
Immersion Coating Unit 浸入式上浆机



Immersion Coating Unit Parameter Table 浸涂机参数表

Unit Name / 设备名称	Immersion Coating Unit
Model / 型号	WN-SJ/400
Dimension (L×W×H) / 外形尺寸	410 × 390 × 1530 mm
Max. Coating Size / 最大涂覆尺寸	500 × 500 mm
Min. Coating Size / 最小涂覆尺寸	50 × 50 mm
Liquid Content / 液体容量	9 L
Weight / 重量	30 kg
Voltage / 电压	220 V
Power / 功率	60 W

Oven 烤箱



Oven Unit Parameter Table 烤箱参数表

Machine Name / 机器名称	Oven
Machine Model / 机器型号	WN-OVEN100
Internal Cavity Dimension / 内腔尺寸 (长×宽×高)	550 × 550 × 450 mm
Temperature Control / 温度控制范围	0 - 200°C
Voltage / 电压	220 V
Power (W) / 功率	1600 W
Dimension (L×W×H) / 外形尺寸 (长×宽×高)	790 × 870 × 640 mm
Weight / 重量	40 kg

UV Exposure Unit 曝光机 (晒版机)

WN-VE/T5060桌面式真空晒版机



Desktop Vacuum Exposure Unit Parameter Table 桌面式真空晒版机参数表

Machine Name / 机器名称	Desktop Vacuum Exposure Unit
Machine Model / 机器型号	WN-VE/T5060
Exposure Light Source / 曝光光源	UV
Lamp Power / 灯管功率	20W
Lamp Specification & Quantity / 灯管规格X数量	600mm (L) X 8pcs
Max. Plate Size / 最大钢板/网板尺寸	500 x 600mm
Max. Exposure Area / 最大曝光面积	480 X 580mm
Voltage / 电压	220V/50Hz
Power (W) / 功率	250 W
Dimension (LxWxH) / 外形尺寸 (长x宽x高)	700 x 600 x 270 mm
Weight / 重量	43 kg

WN-VE/5070 立式真空晒版机



Vacuum Exposure Unit Parameter Table 抽真空晒版机参数表

Machine Name / 机器名称	Vacuum Exposure Unit
Machine Model / 机器型号	WN-VE/5070
Exposure Light Source / 曝光光源	UV lamp
Max. Plate Size / 最大钢板/网板尺寸	600 x 800mm
Max. Exposure Area / 最大曝光面积	500 X 700mm
Voltage / 电压	220V/50Hz
UV lamp Power (W) / 紫外线灯功率	1000W
Machine Power (W) / 功率	1500W
Dimension (LxWxH) / 外形尺寸 (长x宽x高)	920 x 760 x 900 mm
Weight / 重量	60KG

Steel Plate Etching Machine 钢板蚀刻机

Top-spray chemical delivery system compatible with various printing plate materials (oil-hardened steel, chrome steel, carbon steel, and stainless steel plates).

采用上喷药水方式，适用于多种不同材质移印钢板、钢片制版蚀刻（油钢钢板、铬钢钢板、碳钢钢片、不锈钢钢片均适用）。

Precision timer & thermostatic control guarantee consistent etching depth.

时间控制器及恒温装置确保蚀刻深度准确。

The spray nozzles swing in crisscross patterns to optimize etching bottom flatness and accuracy.

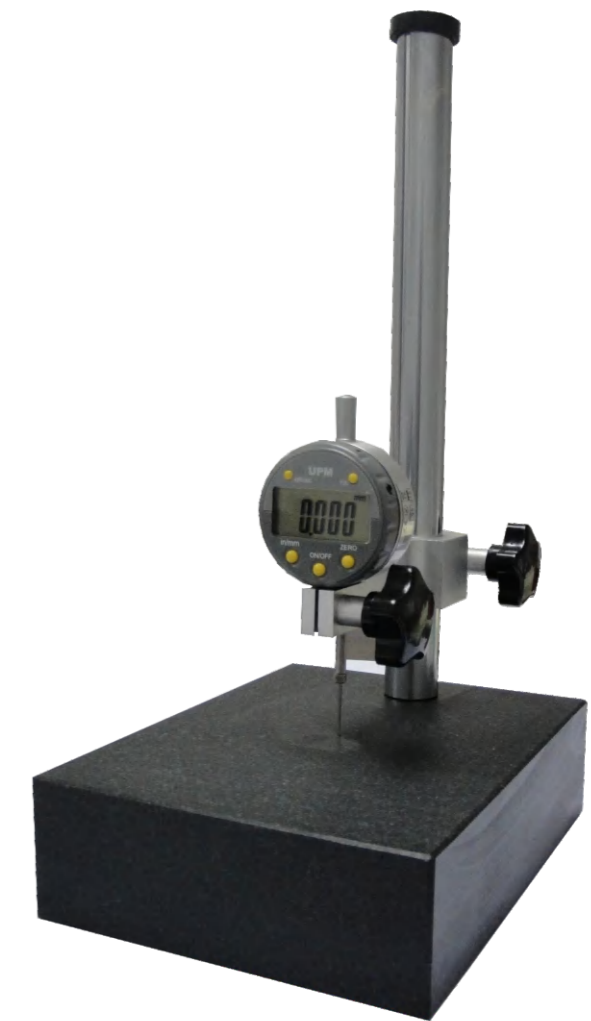
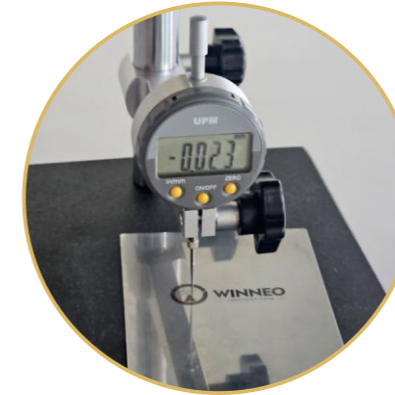
喷雾喷嘴采用交错摆动的方式，以优化蚀刻底部平整度与精度。



Etching Machine Parameter Table 钢板蚀刻机参数表

Machine Name / 机器名称	Steel Plate Etching Machine
Machine Model / 机器型号	WN-SK/6000
Max. Etching Area / 最大蚀刻面积	500 × 500 mm
Max. Etchable Plate Size / 最大可蚀刻板材尺寸	550 × 550 mm
Min. Etchable Plate Size / 最小可蚀刻板材尺寸	100 × 100 mm
Liquid Content / 液体容量	60 L
Voltage / 电压	380 V
Power (W) / 功率	3200 W
Machine Size (L×W×H) / 机器尺寸 (长×宽×高)	1380 × 840 × 1050 mm
Net Weight / 净重	150 kg

Etching Depth Gauge 数显深度计



Etching Depth Gauge Parameter Table 深度计参数表

Base Material底座材质	Marble大理石
Base Dimensions底座尺寸	300(L)X200(W)X50(H)mm
Probe Length探针长度	300mm
Measurement Range测量范围	0-12.5mm
Measurement Accuracy测量精度	0.001mm



WEC is a brand-new ecological space for technological experience and business growth.
WEC是一个集技术体验与商业增长于一体的全新生态空间。

WEC is more than a showroom space — it's a comprehensive experience center integrating brand experience, equipment & consumables solutions, sample gallery, technical training, hands-on experience, sample production, and mini workshop.

WEC不仅仅是一个展示空间——它是一个综合体验中心，集品牌体验、设备与耗材解决方案、样品展厅、技术培训、实操体验、样品制作和迷你工坊于一体。

